

# Coldwell Banker Commercial NRT

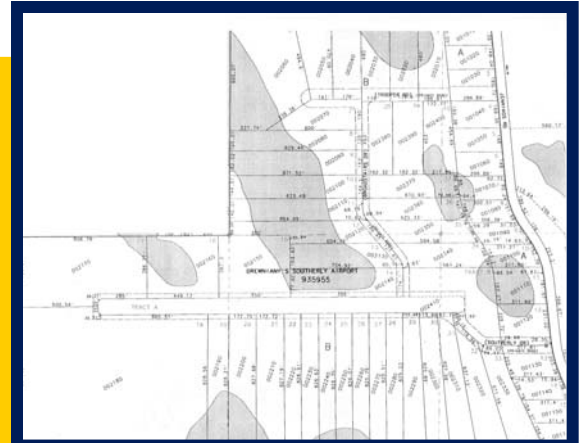
## Southerly Airport, Jennings Road, Dundee, FL



### Platted Airport Community Ready to be Developed!

*Price: \$13 Million*

Southerly Airport is a private airport subdivision located in central Florida. It is a fully licensed FAA-approved private airport. It is currently subdivided into 57 individual luxury home sites. Some lots have direct runway access, and some will have access by way of specially prepared roadways. A tie down area is provided for lots that do not have area for private plane parking.



- 2 to 5 acre lots
- Private Airport/Community
- 30 miles from Orlando
- 45 miles from Tampa
- 170 miles from Jacksonville
- 200 miles from Miami



**Mike Nolen Sr., Gloria J. Spanjers**  
Realtor  
Coldwell Banker Commercial  
NRT  
290 Cypress Gardens Blvd.,  
Winter Haven, FL 33880  
863-294-7541 Office  
863-325-206-4749 Cell Gloria  
863-508-1736 Direct line Gloria  
Gloria@mycommercialteam.com

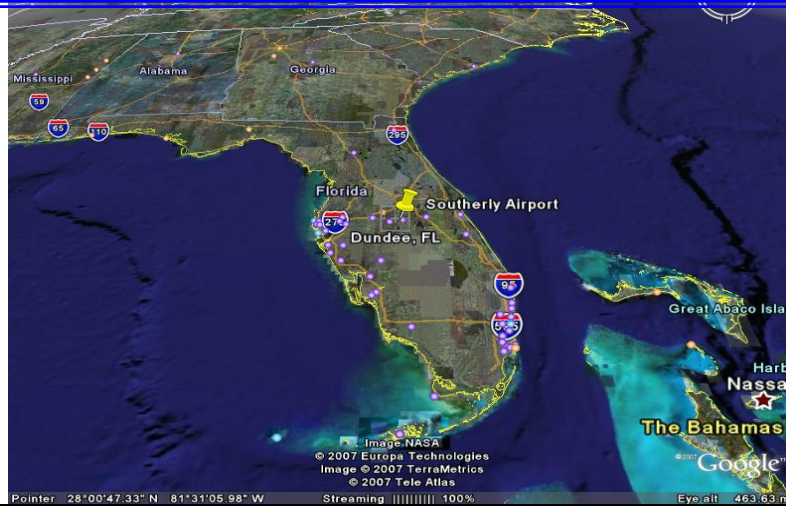


**COLDWELL  
BANKER  
COMMERCIAL**

NRT

Florida's Commercial Real Estate Company

# Southerly Airport



<b>DESCRIPTION:</b>	Southerly Airport is a private airport subdivision located in central Florida. It is a fully licensed FAA-approved private airport. It has the feel of being away from it all with excellent access to shopping, major highways and urban areas.
<b>LOCATION:</b>	Jennings Road, East of Davenport, in Polk County, Florida. This is north of the Chalet Suzanne airstrip and east of Winter Haven's Gilbert Field. This property is located, just west of Sun Air Golf Club.
<b>SITE:</b>	153 +/- acres. It is currently subdivided into 57 individual luxury home sites. Some lots have direct runway access, and some will have access by way of the specially prepared roadways. A tie down area is provided for lots that do not have area for private aircraft parking. Has a sod runway that is 2300 feet in length, with 600 feet of cleared approach.
<b>UTILITIES:</b>	Well and septic tank. Electricity and phone service available.
<b>LAND USE:</b>	Polk County - Residential Suburban (RS)
<b>EMERGENCY:</b>	Fire, Police, and ambulance service available to the site.
<b>PERMITS:</b>	Fully licensed FAA-approved airport.
<b>PRICE:</b>	<b>\$13,000,000.00</b>

**Mike Nolen Sr., Gloria J. Spanjers**  
**Realtor— 863-294-7541**



**COLDWELL  
 BANKER  
 COMMERCIAL**

NRT

*Florida's Commercial Real Estate Company*