

Coldwell Banker Commercial NRT

Lakefront Residential Site - Winter Haven Chain O'Lakes



Fully engineered development with 9 lake front lots and 5 lake view lots on beautiful Lake Conine (part of Winter Haven's Chain of Lakes that connect all the way to Cypress Gardens).

Located just a quarter mile from US Highway 17 between downtown Winter Haven and downtown Lake Alfred and has great access to Interstate 4 and to all the surrounding communities (Winter Haven, Lake Alfred, Auburndale). Winter Haven's Municipal Airport is about 3 miles away.

This property is bordered by Winter Haven's Rails-to-Trails project, giving great access to recreational biking, jogging and skating.

Vacant land (9.6772 acres per Polk PA).

City of Winter Haven - Single Family Residential (R-2) and Conservation (CN) zoning. Residential Low and Conservation future land use.

Mike Nolen Sr., Gloria J. Spanjers
Realtor

**Coldwell Banker Commercial
NRT**

**290 Cypress Gardens Blvd.,
Winter Haven, FL 33880**

863-294-7541 Office

863-325-325-5856 Cell Mike

863-508-1718 Direct line Mike

Mike@mycommercialteam.com

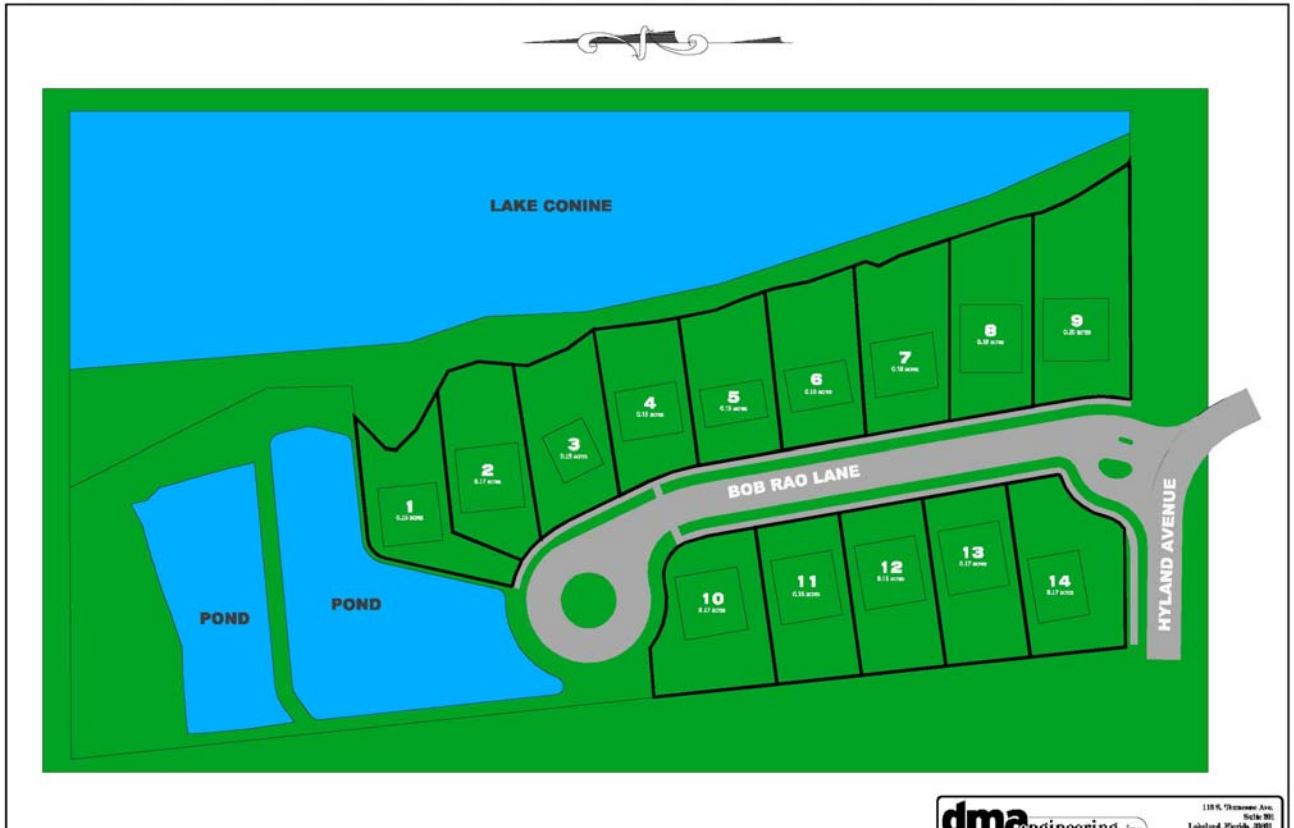


**COLDWELL
BANKER
COMMERCIAL**

NRT

Florida's Commercial Real Estate Company

Nestled on Beautiful Lake Conine, giving the feeling of being away from it all, while still being close to all that one needs.



dma engineering, inc.
 www.dmaeng.com
 11855 Thomas Ave.
 Suite 301
 Lakeland, Florida 33801
 Phone: 883 913 8000
 Fax: 883 913 8000
 CIVIL ENGINEERING • LANDSCAPE ARCHITECTURE • SITE DESIGN • SURVEYING • MECHANICAL ENGINEERING



Recently-completed Rails-to-Trails Project borders the property to the west, connecting this property to both Winter Haven and Lake Alfred.

Mike Nolen Sr., Gloria J. Spanjers
 Realtor— 863-294-7541