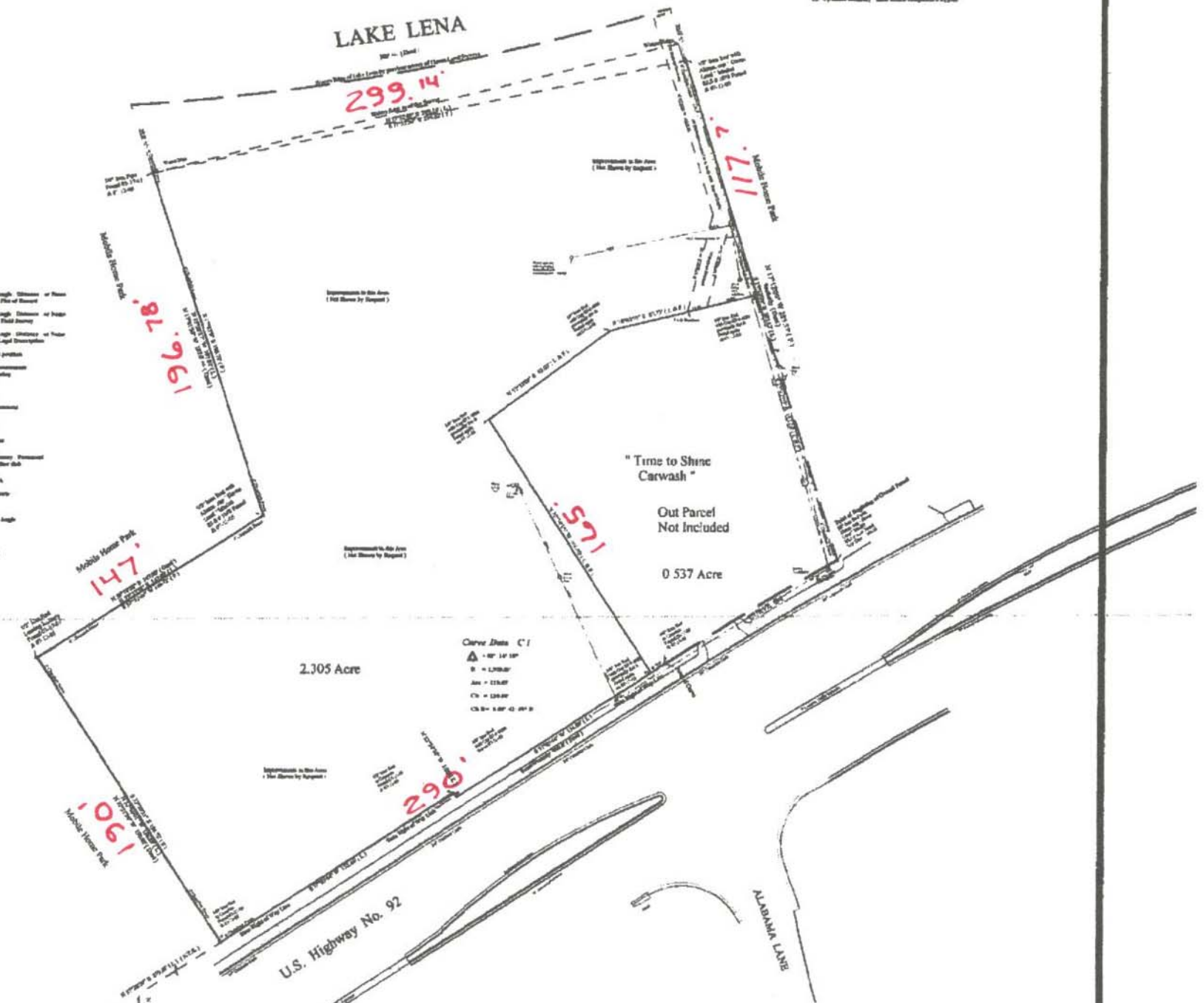


# LAKE LENA

- LEGEND**
- (P) (C) = Bearing, angle, distance or line shown at P/C of Survey
  - (P) (P) = Bearing, angle, distance or line Fixed by First Survey
  - (L) (L) = Bearing, angle, distance or line given by Legal Description
  - (C) (L) = Chain and position
  - F.C.S. = Point of Commencement
  - F.P.S. = Point of Beginning
  - S.M. = Survey Mark
  - S.S. = Stone Stake
  - S.D. = Stake
  - S.P. = Stake
  - S.T. = Stake
  - S.C. = Concrete Monument
  - S.W. = Wood
  - S.T.S. = Metal Stake
  - S.D. = Sign at Top
  - C.L. = Centerline
  - A.C. = All Conditions
  - C. = Curved
  - = Concrete boundary, permanent monument or other data
  - S.S. = Sprinkler
  - C.S. = Concrete curb
  - S.S. = Sidewalk
  - S.S.S. = Checkered Sidewalk
  - P.P. = Paved Pavement
  - △ = Station or Control Angle
  - S. = Station
  - I = Intersection
  - L = Line Length
  - CL = Chain Length
  - C.S.S. = Closed Station



# 2.32 AC'S - AUBURNDALE PROPERTY